

Newsletter May 2016

Following the significant changes in personnel on the Board as noted in the 2015 Annual Report and the development of a new Committee Management Structure we are aiming to improve our operating efficiencies and deliver greater support to young people in the Bush.

The Foundation remains firmly committed to assisting in the education of isolated and disadvantaged young people from remote areas of NSW and the border areas of adjoining states. Such support includes bursaries to assist with school boarding fees, scholarships to support students towards apprenticeships while still at school and those relating to university degrees.

AGM and Board Meetings

The Foundation's AGM was held in September 2015 and the office bearers for 2016 were reappointed with Richard Dougan, Chairman, Rod Cowdroy, Deputy Chairman and John McRae, Treasurer.

Two retirements from the Board were received from Malcolm Elmslie and Margaret Wick after many years of outstanding service. Malcolm has been our Archivist for many years and has agreed to continue in this capacity. Margaret has been invaluable in the management of our scholarship programs especially with the selection of CSU scholarship recipients.

The directors and partners attended a function at Tobruk Sheep Station near Wisemans Ferry to thank Cliff and Sue Cowdroy for the outstanding commitment they have both made to the Foundation and presented them with tokens of our appreciation.



Chairman Richard Dougan presents Sue Cowdroy with flowers



BCEF Directors at Cliff and Sue Cowdroy's Presentation

Bursaries and Scholarships

This year we have awarded 28 *Secondary Boarding Bursaries* and rejected 8 applications. The bursaries are for students attending: Red Bend College; Mackillop Catholic College; Kinross Wallaroi College; All Saint's Anglican College; Calrossi Anglican School; The Armidale School; Farrer Memorial High School; and Yanco Agricultural High School.

Our support for Scholarships at Charles Sturt University has increased to five this year with three funded by BCEF and two funded through family bequests from the Gaudry and Pockley families. All of our scholarship recipients achieved very high academic levels last year with a grade point average of 5.75 or above out of 7.0.

Mrs Pat Gaudry and Mrs Jenny Pockley were presented with their CSU Certificates of Support at a function at the NSW Parliament House hosted by BCEF Director, The Hon. Duncan Gay, MLC, Minister for Roads, Maritime and Freight.



Directors Jenetta Russell, Hon Duncan Gay, Richard Dougan and Margaret Malone present Pat Gaudry (centre) with the CSU Certificate of Support



BCEF Chair Richard Dougan and Hon Duncan Gay present Mrs Jenny Pockley and her daughter Fiona with the CSU Certificate of Support

BCEF Website

The BCEF website <http://bcef.org.au/> has been updated and modernised to assist donors to support us and for applicants to apply for scholarships and bursaries on-line. We hope you like the new format.

BCEF and Social Media

The changing digital world we live in demands that we keep our organisation up to date with the latest social media including Facebook, Twitter and Instagram. We are currently rolling out our presence in these media and will provide more details soon.

BCEF Strategic Plan 2016-2021

The directors are developing a Strategic Plan to set the Directions, Goals, Strategies and Actions for the Foundation for the next five years. A workshop to develop this was held last month and the plan should provide a very strong platform for the Foundation to develop its support for young people in the bush.



BCEF Directors Planning Workshop 18th April

Donations

Once again we salute all our supporters and donors for your greatly valued assistance. The results achieved by those we have supported in the last year have been outstanding.

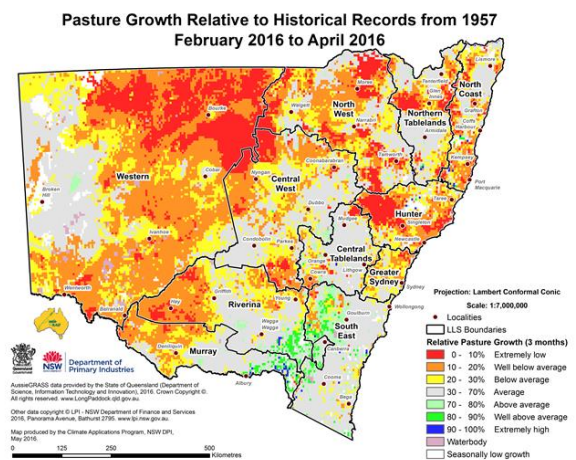
Your support is critical to the delivery of scholarships and bursaries to applicants for assistance. Corporate donations have been received this year from Teachers

Mutual Bank and the Order of St Lazarus and we warmly thank them for their continuing support.

The Board is looking forward to a number of functions and activities in the next year which will significantly improve its funding of scholarships and bursaries and its delivery of educational opportunities to isolated and disadvantaged young people from NSW and its borders.

Ongoing Effects of Drought in NSW

We appreciate and continue to rely heavily on your support for young people in outback NSW. Many areas have had relieving rainfall however the map below highlights how long-term drought limits pasture growth creating ongoing problems for animal and crop production.



It is vital for us to receive donations in the good times and the bad times so that our work matches the special needs of young people in the bush in the short and long term.

With Best Wishes

Richard Dougan - Chairman
25th May 2016

BCEF Contact Details

PO Box 138
Lindfield NSW 2070
Phone: (02) 9416 4630
Fax: (02) 9416 1316
Email: nfo@bcef.org.au
Website: www.bcef.org.au